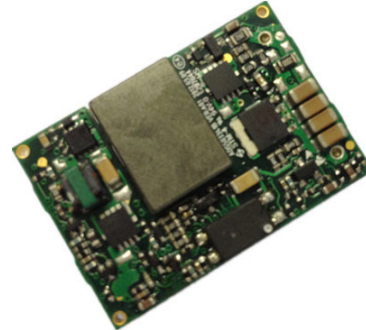


Description

The AVD50B-48S3V3 is a single output DC-DC converter with standard sixteenth-brick outline and pin configuration. It delivers up to 15A output current with 3.3V output voltage. Above 91% ultra-high efficiency and excellent thermal performance make it an ideal choice to supply power in telecom and datacom. It can work under -40°C ~ +85°C.



- Output short circuit protection
- Output over-voltage protection
- Over-temperature protection

Operational Features

- Delivers up to 15A output current
- Ultra-high efficiency 91% typ. at full load
- Wide input range: 36V ~ 75V
- Excellent thermal performance
- No minimum load requirement
- Basic isolation
- High power density
- Low output noise
- Reflow soldering enabled
- RoHS 6 compliant

Mechanical Features

- Industry standard sixteenth-brick pin-out outline
- SMT or through-hole option

Control Features

- Remote control function (negative logic)
- Remote output sense
- Trim function: 80% ~ 110%

Safety & EMC

- Meets basic insulation requirements of IEC/EN/UL/CSA 60950
- UL/CSA 60950 recognized and certified to EN 60950
- Meets the Low Voltage Directives 2006/95/EEC with the Amendment Directive 93/68/EEC which facilitates CE marking in user's end product
- Approved by UL and TUV
- Materials meet UL94,V-0 flammability rating
- Meets conducted emission's requirements of EN55022 Class A with external filter

Protection Features

- Input under-voltage lockout
- Output over-current protection

Electrical Characteristics

(Ta = 25°C, airflow rate = 300 LFM, Vin = 48Vdc, nominal Vout unless otherwise noted.)

Parameter		Min.	Typ.	Max.	Unit	Notes & conditions
Absolute max. ratings						
Input voltage	Non-operating			100	V	100ms
	Operating			80	V	Continuous
Operating temperature		-40		+85	°C	
Storage temperature		-55		+125	°C	
Voltage at remote ON/OFF pin		-0.3		10	V	
Input characteristics						
Operating input voltage range		36	48	75	V	
Input under-voltage lockout	Turn-on voltage threshold	31		36	V	
	Turn-off voltage threshold	30		35	V	
	Lockout voltage hysteresis	1		3	V	
Max. input current				2	A	36Vin, full load
No-load input current			0.04		A	
Standby input current			0.01		A	Remote OFF
Input reflected ripple current				40	mA	Through 12µH inductor; Figure 15
Recommended input fuse				5	A	External fast blow fuse is recommended; Figure 11
Input filter component values (C/L)			0\1		µF\µH	Internal values
Recommended external input capacitance			100		µF	Low ESR capacitor is recommended; Figure 11
Output characteristics						
Output voltage set point (standard option)		3.25	3.3	3.35	V	Half load
Output voltage line regulation				0.2	%	
				6.6	mV	
Output voltage load regulation				0.5	%	
				16.5	mV	
Output voltage temperature regulation				0.02	%/°C	

Parameter		Min.	Typ.	Max.	Unit	Notes & conditions
Total output voltage range		3.2	3.3	3.4	V	Over sample, line, load, temperature & life
Output voltage ripple and noise			70	120	mVpp	Figure 2; test condition: 10u tantalum (ESR ≤ 100mΩ)//1u ceramic capacitor; Figure 15
Output voltage ripple and noise			70	100	mVpp	Test condition: minimum output capacitor//1u ceramic capacitor; Figure 15
Operating output current range		0		15	A	
Output DC current-limit inception		16		24	A	Hiccup: auto-restart when over-current condition is removed
Output capacitance		220	470	2200	μF	Aluminum solid capacitor is recommended.
Dynamic characteristics						
Dynamic response	50% ~ 75% ~ 50% I _{o,max} , 0.1A/μs			100	mV	Figure 4 Test condition: Figure 11
	25% ~ 50% ~ 25% I _{o,max} , 0.1A/μs					
	Settling time		100		μs	Recovery to within 1% V _{o,nom}
	50% ~ 75% ~ 50% I _{o,max} , 1A/μs		150		mV	Figure 5 Test condition: Figure 11
	25% ~ 50% ~ 25% I _{o,max} , 1A/μs					
	Settling time		100		μs	Recovery to within 1% V _{o,nom}
Turn-on transient	Rise time			50	ms	Figure 6
	Turn-on delay time			100	ms	
	Output voltage overshoot			5	%V _o	
Efficiency						
100% load			91		%	Figure 1
60% load			90.5		%	Figure 1

Electrical Characteristics (Continued)

Parameter	Min.	Typ.	Max.	Unit	Notes & conditions
Isolation characteristics					
Isolation voltage (conditions: 1mA for 60s, slew rate of 1500V/10s)	1500			V	Basic insulation, pollution degree 2, input to output
				V	Basic insulation, pollution degree 2, input to baseplate
				V	Functional insulation, pollution degree 2, output to baseplate
Feature characteristics					
Switching frequency	360	380	400	kHz	
Remote ON/OFF control (negative logic)	Off-state voltage	3.5	12	V	Figure 12
	On-state voltage	-0.3	1.2	V	
Output voltage trim range	2.64		3.63	V	See <i>Trim Characteristics of Application Note</i>
Output over-voltage protection	120		160	%Vo, nom	Hiccup: auto-restart when over-voltage condition is removed
Over-temperature shutdown	110	125	135	°C	Auto recovery; over-temperature protect (OTP) test point: Figure 10
Over-temperature hysteresis		10		°C	
Output voltage remote sense range			0.33	V	
Reliability characteristics					
Calculated MTBF (telcordia)		2.0		10 ⁶ h	Telcordia SR-332-2006; 80% load, 300LFM, 40°C Ta

Electromagnetic Compatibility Requirements

Test item	Regulations	Criteria	Notes & conditions
Conducted emission	EN 55022 DC input port, class A limits		See EMC Test Conditions
Immunity to electrostatic discharge	IEC/EN61000-4-2 Enclosure port, level 3	B	
Immunity to electrical fast transient	IEC/EN61000-4-4 DC input port, level 3	B	
Immunity to surges	IEC/EN61000-4-5 DC input port Line to ground (earth): 600V Line to line: 600V	B	
Immunity to continuous conducted interference	IEC/EN61000-4-6 DC input port, level 2	A	
Immunity to voltage dips and short interruptions and voltage variations	EN 61000-4-29 DC input port	B	

Criterion A: Normal performance during and after test.

Criterion B: For EFT and surges, low-voltage protection or reset is not allowed. Temporary output voltage fluctuation ceases after the disturbances ceases, and from which the EUT recovers its normal performance automatically.

For dips and ESD, output voltage fluctuation or reset is allowed during the test, but recovers to its normal performance automatically after the disturbance ceases.

Criterion C: Temporary loss of output, the correction of which requires operator intervention.

Criterion D: Loss of output which is not recoverable, owing to damage to hardware.

Qualification Testing

Parameter	Unit (pcs)	Test condition
Halt test	4 ~ 5	$T_{a,min} - 10^{\circ}C$ to $T_{a,max} + 10^{\circ}C$, $5^{\circ}C$ step, $V_{in} = \text{min to max}$, 0 ~ 105% load
Vibration	3	Frequency range: 5Hz ~ 20Hz, 20Hz ~ 200Hz, A.S.D: $1.0m^2/s^3$, -3db/oct, axes of vibration: X/Y/Z Time: 30 min/axes
Mechanical shock	3	30g, 6ms, 3 axes, 6 directions, 3 time/direction
Thermal shock	3	-40°C to +100°C, unit temperature 20 cycles
Thermal cycling	3	-40°C to +55°C, temperature change rate: 1°C/min, cycles: 2 cycles

Parameter	Unit (pcs)	Test condition
Humidity	3	40 °C, 95%RH, 48h
Solder ability	15	IPC J-STD-002C-2007

Characteristic Curves

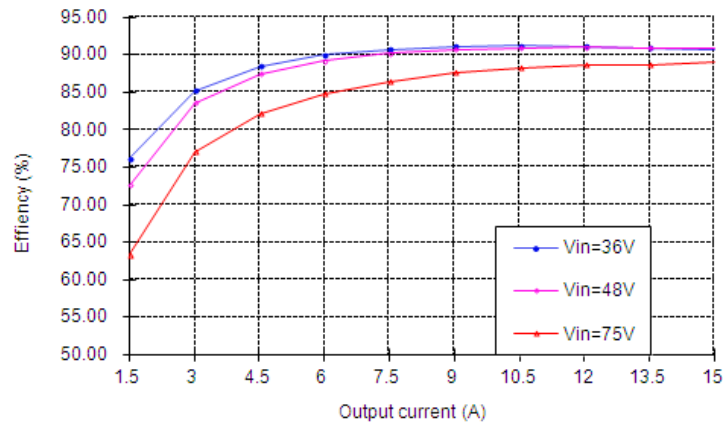


Figure 1 Efficiency vs. output current, Ta = 25°C, 400LFM, Vo = 3.3V

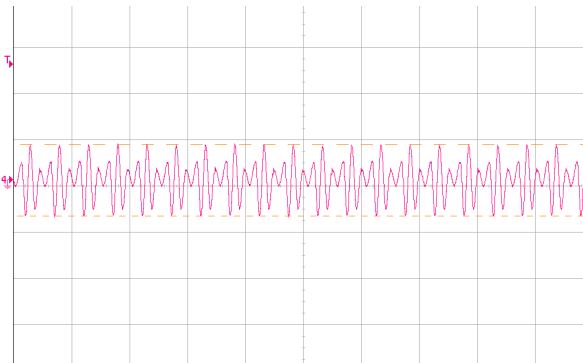


Figure 2 Output ripple & noise (5µs/div, 50mV/div), see Figure 15 for test configuration

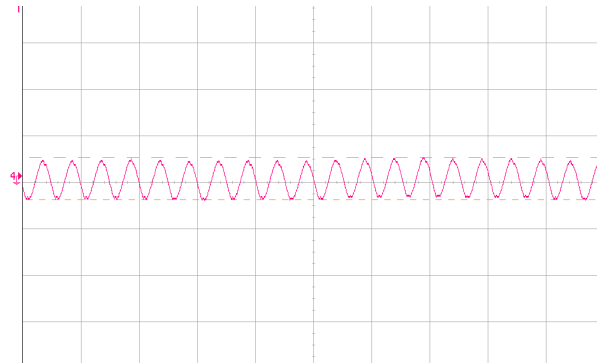


Figure 3 Input reflected ripple current (5µs/div, 5mA/div), see Figure 15 for test configuration

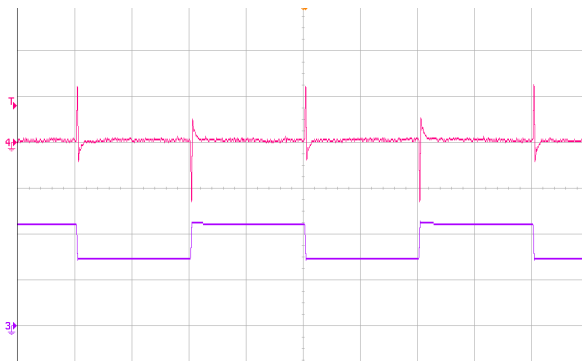


Figure 4 Dynamic response for 25% load step (50% ~ 75% ~ 50%) and 0.1A/µs slew rate, (2ms/div), see Figure 11 for test configuration; CH3-output current (5A/div); CH4-output voltage (20mV/div)

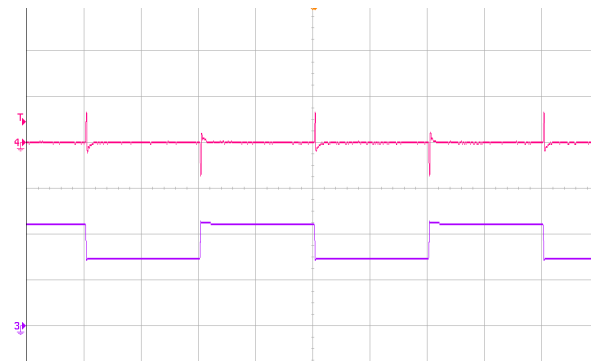


Figure 5 Dynamic response for 25% load step (50% ~ 75% ~ 50%) and 1A/µs slew rate, (2ms/div), see Figure 11 for test configuration; CH3-output current (5A/div); CH4-output voltage (50mV/div)

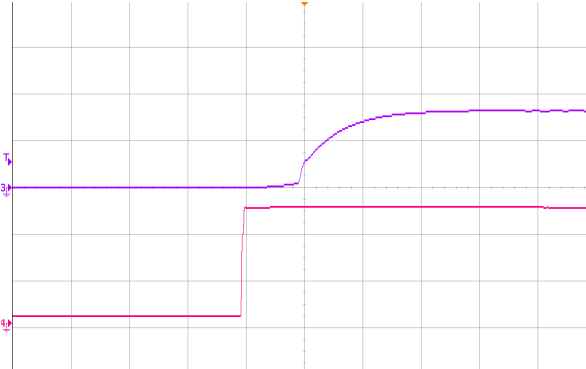


Figure 6 Output voltage startup by power on, (2ms/div), see Figure 11 for test configuration; CH4-intput voltage (20V/div); CH3-output voltage (2V/div)

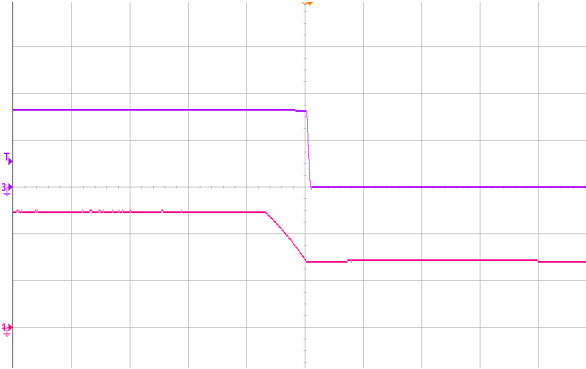


Figure 7 Output voltage shut down by power off, (2ms/div), see Figure 11 for test configuration; CH4-intput voltage (20V/div); CH3-output voltage (2V/div)

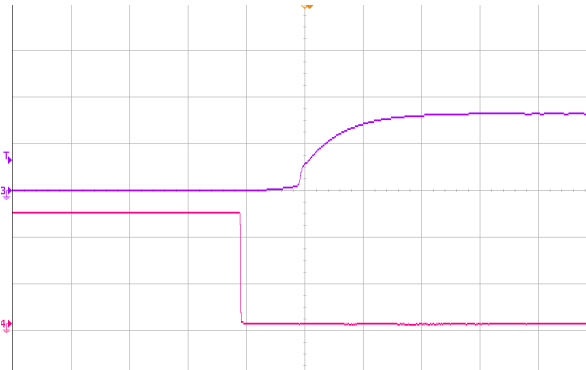
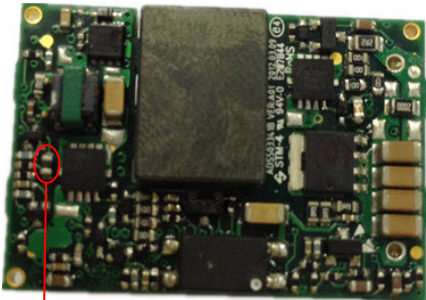


Figure 8 Output voltage startup by remote ON, (2ms/div), see Figure 11 for test configuration; CH4-remote ON (2V/div); CH3-output voltage (2V/div)



Figure 9 Output voltage shutdown by remote OFF, (500µs/div), see Figure 11 for test configuration; CH4-remote ON (2V/div); CH3-output voltage (2V/div)



OTP test point

Figure 10 OTP test point

Application Note

Typical Application

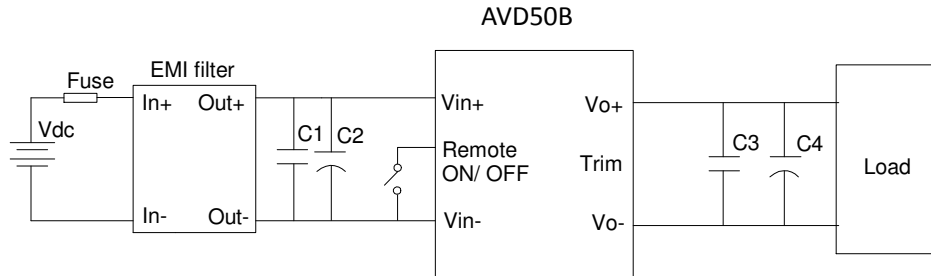


Figure 11 Typical application

C1: 100 μ F/100V electrolytic capacitor; P/N: UPW2A101MHD (Nichicon) or equivalent caps
 C2, C3: 1 μ F/100V X7R ceramic capacitor, P/N: C3225X7R2A105KT0L0U (TDK) or equivalent caps
 C4: 470 μ F aluminum solid capacitor, P/N: 16SEPC470M (OS-CON) or equivalent caps
 Fuse: External fast blow fuse with a rating of 5A. The recommended fuse model is 216005.P from LITTLEFUSE.

Remote ON/OFF

Negative remote ON/OFF logic is available in AVD50B-48S3V3. The logic is CMOS and TTL compatible.

The voltage between pin Remote ON/OFF and pin Vin- must not exceed the range listed in *Feature Characteristics* to ensure proper operation. The external remote ON/OFF circuit is highly recommended as shown in Figure 12.

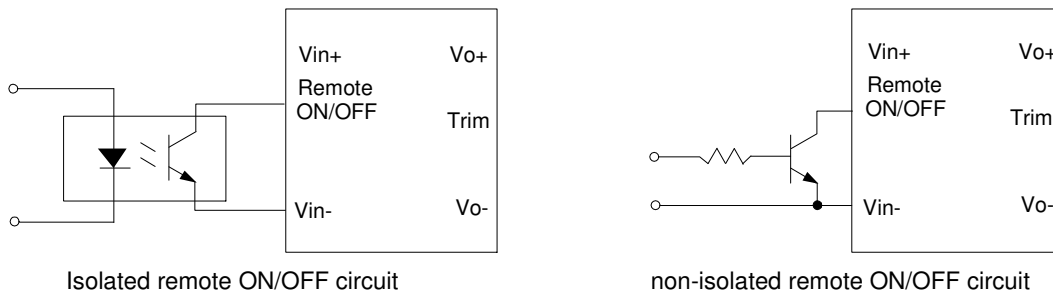


Figure 12 External remote ON/OFF circuit

Trim Characteristics

Connecting an external resistor between Trim pin and Vo- pin will decrease the output voltage, while connecting it between Trim and Vo+ will increase the output voltage. The following equations determine the external resistance to obtain the trimmed output voltage.

$$R_{adj-down} = \frac{510}{\Delta} - 10.2(K\Omega)$$

$$R_{adj-up} = \frac{5.1 \times V_{nom} \times (100 + \Delta)}{1.225 \times \Delta} - \frac{510}{\Delta} - 10.2(K\Omega)$$

Δ : Output e rate against nominal output voltage.

$$\Delta = \left| \frac{100 \times (V_{nom} - V_o)}{V_{nom}} \right|$$

V_{nom} : Nominal output voltage.

For example, to get 3.63V output, the trimming resistor is

$$\Delta = \frac{100 \times (V_{nom} - V_o)}{V_{nom}} = \frac{100 \times (3.63 - 3.3)}{3.3} = 10$$

$$R_{adj-up} = \frac{5.1 \times 3.3 \times (100 + 10)}{1.225 \times 10} - \frac{510}{10} - 10.2 = 89.9(K\Omega)$$

When trimming up, the output current should be decreased accordingly so as not to exceed the maximum output power .

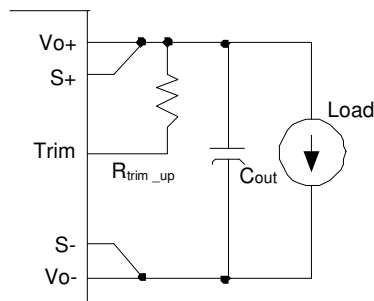


Figure 13 Trim up

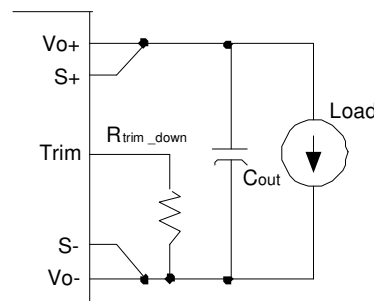


Figure 14 Trim down

For AVD50B-48S3V3-6L, if the sense compensate function is not necessary, connect S+ to Vo+ and S- to Vo- directly.

Input Ripple & Inrush Current And Output Ripple & Noise Test Configuration

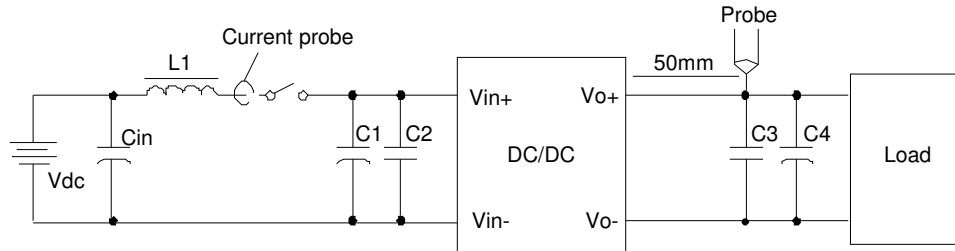


Figure 15 Input ripple & inrush current, output ripple & noise test configuration

Vdc: DC power supply

L1: 12 μ H

Cin: 220 μ F/100V typical

C1 ~ C4: See Figure 11

Note: It is recommended to use a coaxial cable with series 50 Ω resistor and 0.68 μ F ceramic capacitor or a ground ring of probe to test output ripple & noise.

EMC Test Conditions

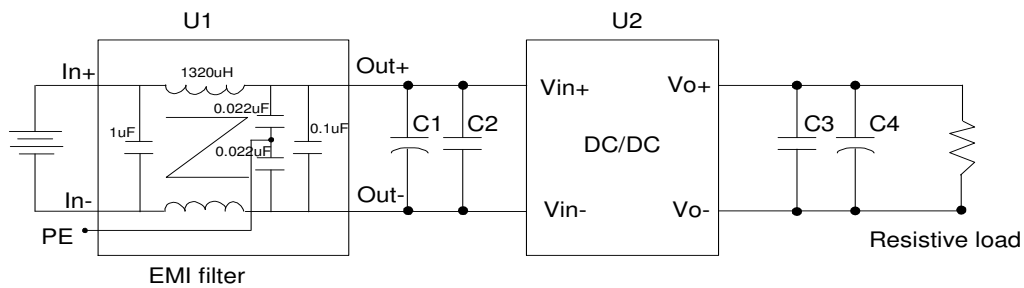


Figure 16 EMC test configuration

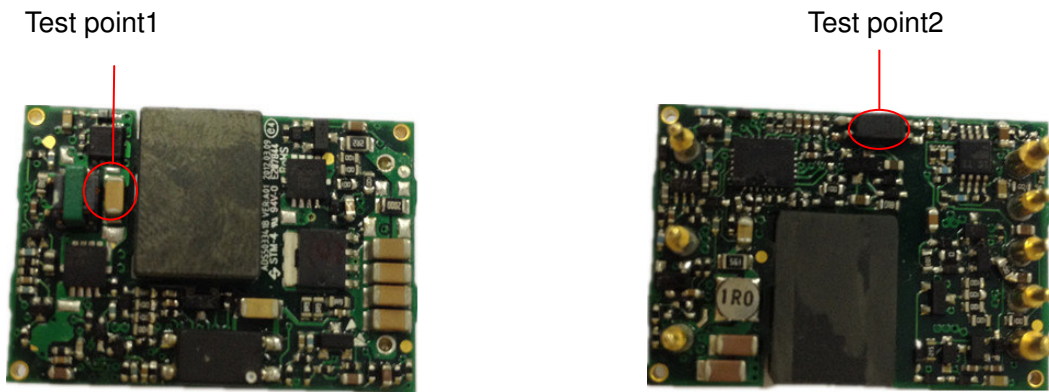
U1: Input EMC filter

U2: Module to test, AVD50B-48S3V3

C1 ~ C4: See Figure 11

Thermal Considerations

The converter is designed to operate in different thermal environments and sufficient cooling must be provided. Proper cooling of the DC-C converter can be verified by measuring the temperature at the test points shown in Figure 17. The temperature at these points should not exceed the maximum values listed in Table 1.



Temperature test point on FR-4 board

Figure 17 Temperature test points

Table 1 Temperature limit of the test points

Test point	Temperature limit
Test point 1	118 °C
Test point 2	107 °C

For a typical application, Figure 18 shows the derating of output current vs. ambient air temperature at different air velocity.

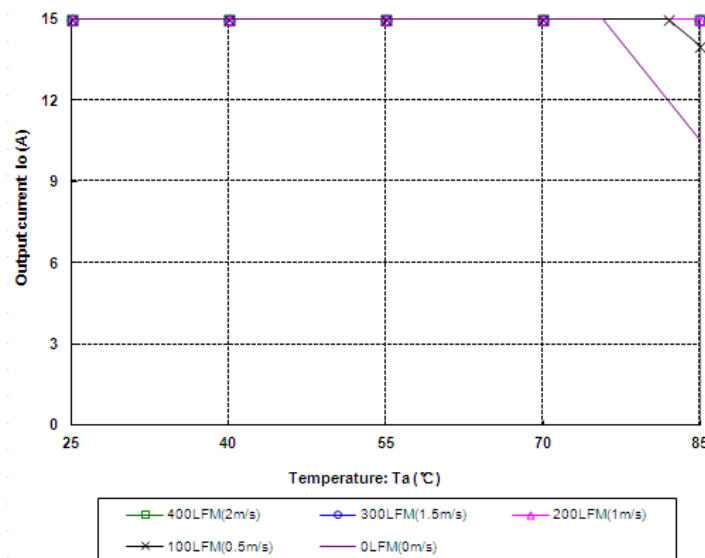
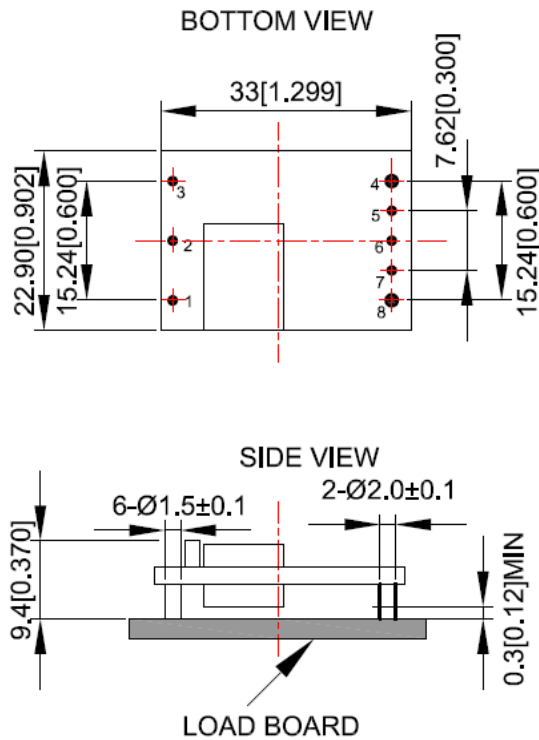


Figure 18 Output power derating, 48V_{in}, air flowing across the converter from pin 3 to pin 1

Mechanical Diagram



UNIT: mm[inch] BOTTOM VIEW: pin on upside
 TOLERANCE: X.Xmm±0.5mm[X.X in.±0.02in.]
 X.XXmm±0.25mm[X.XX in.±0.01in.]

Figure 19 Mechanical diagram (AVD50B-48S3V3-6L)

Pin length option

Device code suffix	L
-4	4.8mm ± 0.25mm
-6	3.8mm ± 0.25mm
-8	2.8mm ± 0.25mm
None	5.8mm ± 0.25mm

Pin Designations (AVD50B-48S3V3-6L)

Pin No.	Name	Function
1	V_{in+}	Positive input terminal
2	Remote ON/OFF	ON/OFF control terminal
3	V_{in-}	Negative input terminal
4	V_{o-}	Negative output terminal
5	S-	Negative remote sense
6	Trim	Output voltage trim
7	S+	Positive remote sense
8	V_{o+}	Positive output terminal

Soldering

The product is intended for standard manual, reflow or wave soldering.

When reflow soldering is used, the temperature on pins is specified to maximum 260°C for maximum 10s.

When wave soldering is used, the temperature on pins is specified to maximum 260°C for maximum 7s.

When manual soldering is used, the iron temperature should be maintained at 300°C ~ 380°C and applied to the converter pins for less than 10s. Longer exposure can cause internal damage to the converter.

Cleaning of solder joint can be performed with cleaning solvent IPA or similitive.

Package Information

1. Package type: Moisture sensitivity level 3, moisture barrier bags
2. Minimal package quantity: 192 PCS
3. Package disassembly

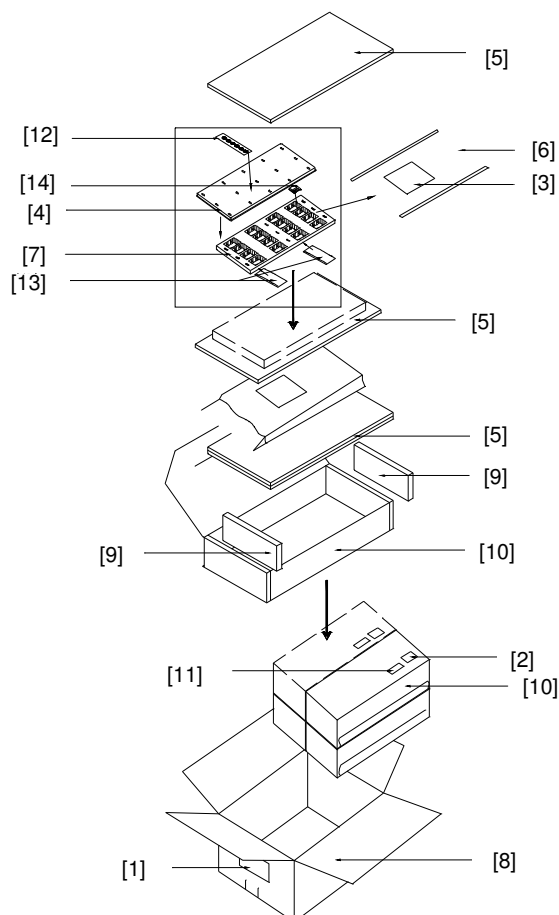


Figure 20 Package disassembly

Table 2 Assemblies description

No.	Description
1	Shipping label
2	Moisture proof identification label
3	Moisture proof caution label
4	Tray cover
5	Anti-static PE foam 1
6	Moisture barrier bag
7	Tray
8	Shipping carton

No.	Description
9	Anti-static PE foam 2
10	Inner box
11	Model barcode label
12	Humidity indicating card
13	Desiccant
14	Model

4. Package tray information

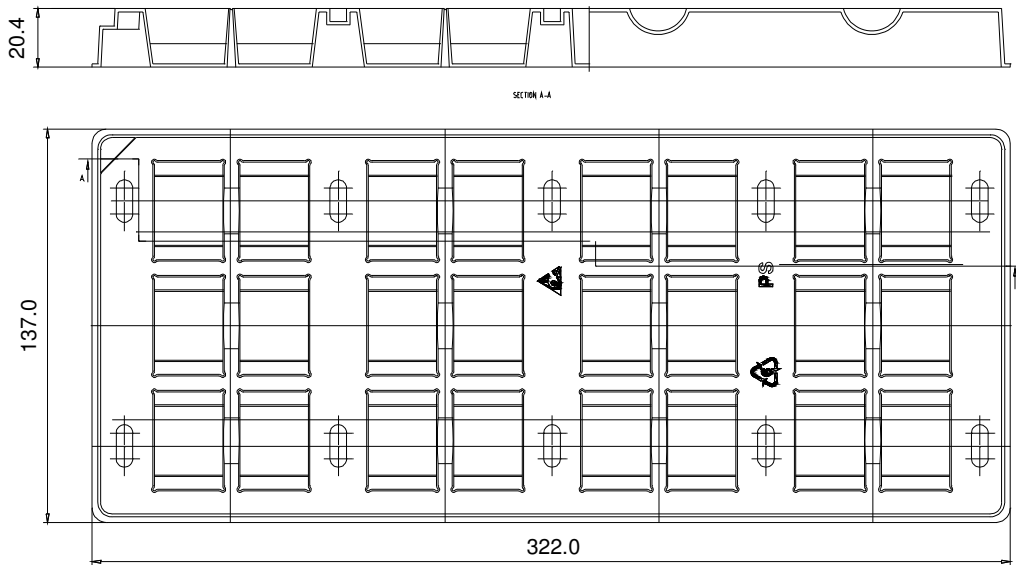


Figure 21 Package tray

Ordering Information

AVD50B	-	48	S	3V3				6	L
①		②	③	④	⑤	⑥	⑦	⑧	⑨

①	Model series	AVD: high efficiency sixteenth-brick series, 50: output power 50W
②	Input voltage	48: 36V ~ 75V input range, rated input voltage 48V
③	Output number	S: single output
④	Rated output voltage	3V3: 3.3V output
⑤	Remote ON/OFF logic	Default: negative logic; P: positive logic
⑥	Baseplate	B: with baseplate; default: open frame
⑦	-	Need "-" for through-hole unit, to separate the data of voltage and pin length, omit for SMT unit
⑧	Pin length	S: SMT; 6: 3.8mm ± 0.25mm
⑨	RoHS status	Y: RoHS, R5; L: RoHS, R6

Model number	Description
AVD50-48S3V3-6L	3.8mm pin length; negative on logic; without thread inside mounting hole; R6 compliant

Hazardous Substances Announcement (RoHS Of China)

Parts	Hardarzous substances					
	Pb	Hg	Cd	Cr ⁶⁺	PBB	PBDE
AVD50B-48S3V3	x	x	x	x	x	x

x: Means the content of the hazardous substances in all the average quality materials of the part is within the limits specified in SJ/T-11363-2006

√: Means the content of the hazardous substances in at least one of the average quality materials of the part is outside the limits specified in SJ/T11363-2006

Emerson Network Power Co., Ltd. has been committed to the design and manufacturing of environment-friendly products. It will reduce and eventually eliminate the hazardous substances in the products through unremitting efforts in research. However, limited by the current technical level, the following parts still contain hazardous substances due to the lack of reliable substitute or mature solution:

1. Solders (including high-temperature solder in parts) contain plumbum.
2. Glass of electric parts contains plumbum.
3. Copper alloy of pins contains plumbum