



**Astec Standard Power Europe**  
 Astec House, Waterfront Business  
 Park, Merry Hill, Dudley  
 DY5 1LX, UK  
 Tel: 01384 842211  
 Fax: 01384 843355

**Astec Germany GmbH**  
 Robert-Heil-Str. 8  
 36251 Bad Hersfeld  
 Tel: 06621-5057-0  
 Fax: 06621-5057-20

**Astec France**  
 Les Arcades  
 424, la Closerie Mont d'Est  
 93194 Noisy Le Grand  
 Tel: (1) 43 05 86 80  
 Fax: (1) 43 04 60 33

## Application Note Number ...136....

**Product : LP150 range**

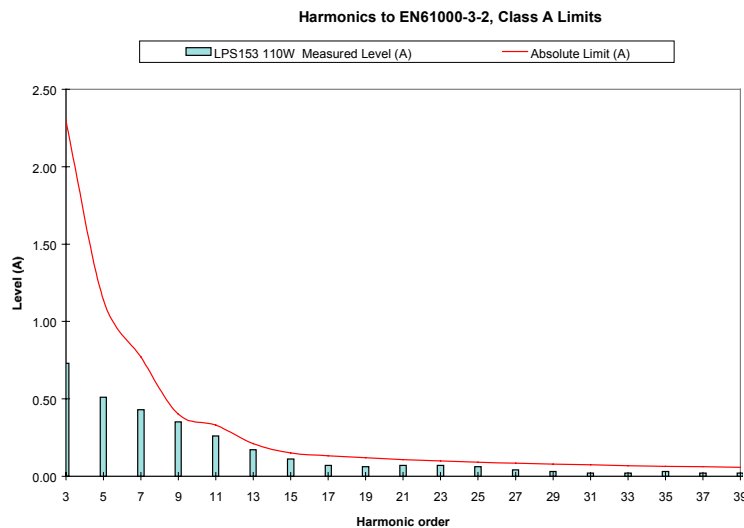
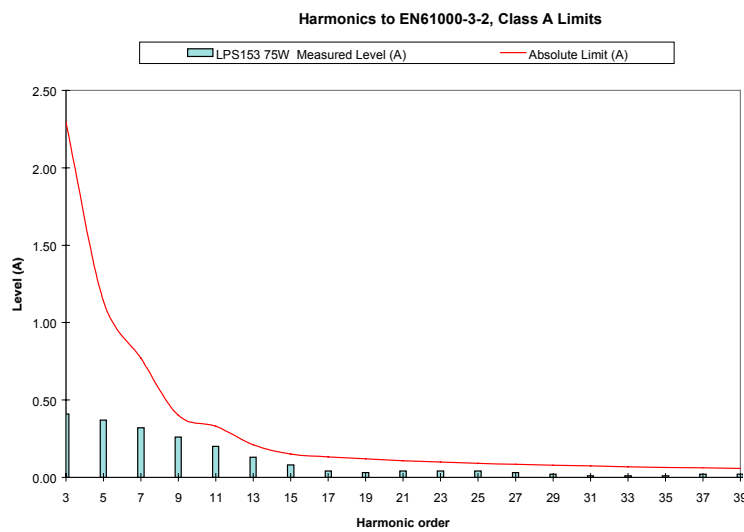
**Application Overview: Mains Harmonic Performance to EN61000-3-2 Class A**

Originator: G. Fry

Location: Merry Hill

Date: 26/7/00

### Schematic



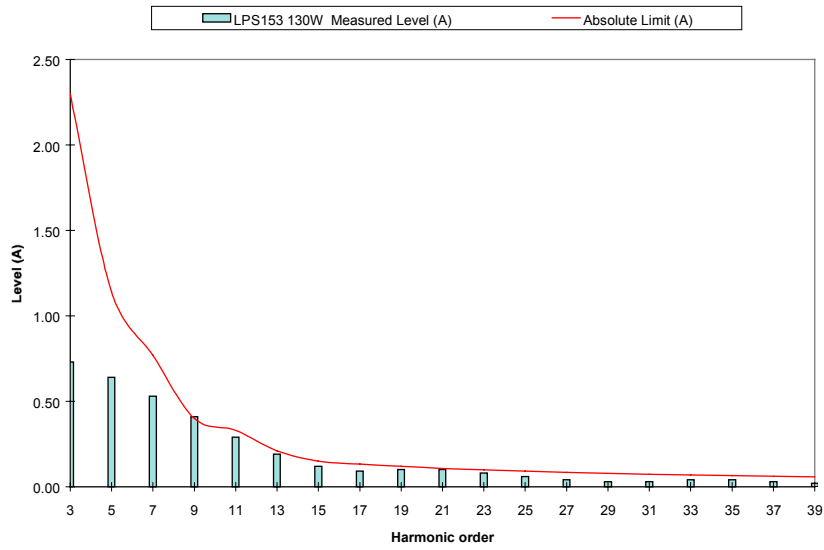
### Description

The LP150 range of Astec Power supplies has been tested to the European Standard EN61000-3-2 Class A Mains Harmonic Distortion requirements. The Charts above gives the results for the LPS153 at 75W and 110W. On the next page are charts for the LPS153 at 130W and 150W, and the chart for the LPQ153 at 75W. The third page gives the charts for the LPQ153 at 110W, 130W and 150W. As can be seen from the charts the LP150 range will meet the requirements of the EN61000-3-2 Class A without modification if not used at full power. These results are typical for the whole range of LP150 power supplies.

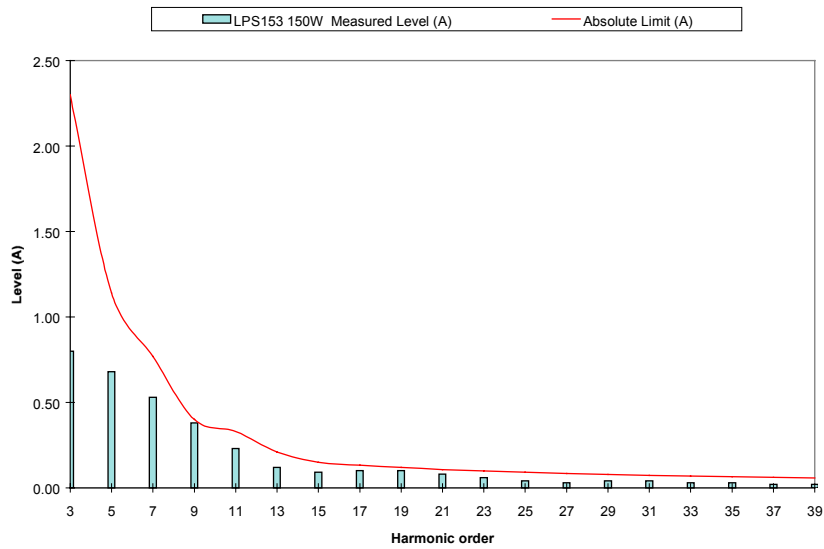


Description (continued)

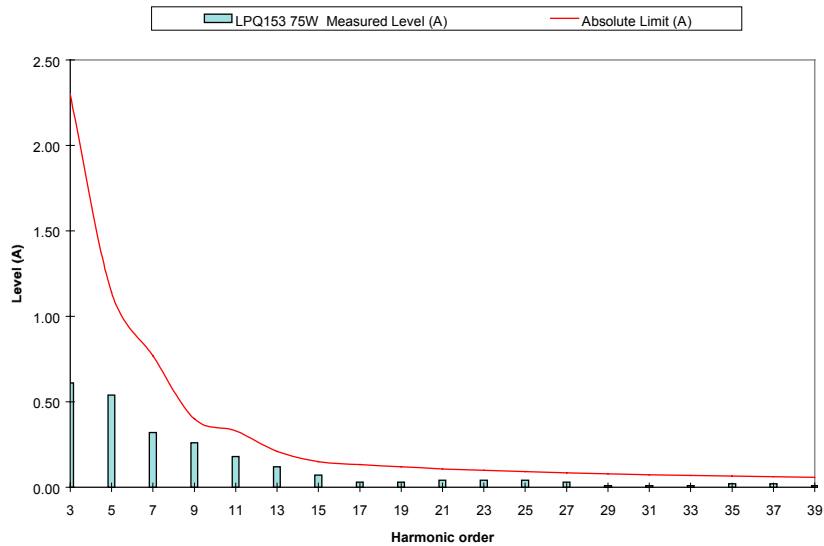
Harmonics to EN61000-3-2, Class A Limits



Harmonics to EN61000-3-2, Class A Limits



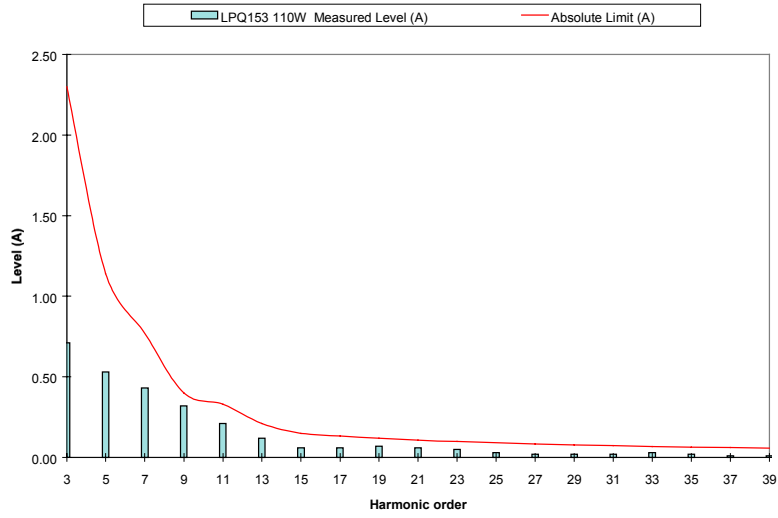
Harmonics to EN61000-3-2, Class A Limits



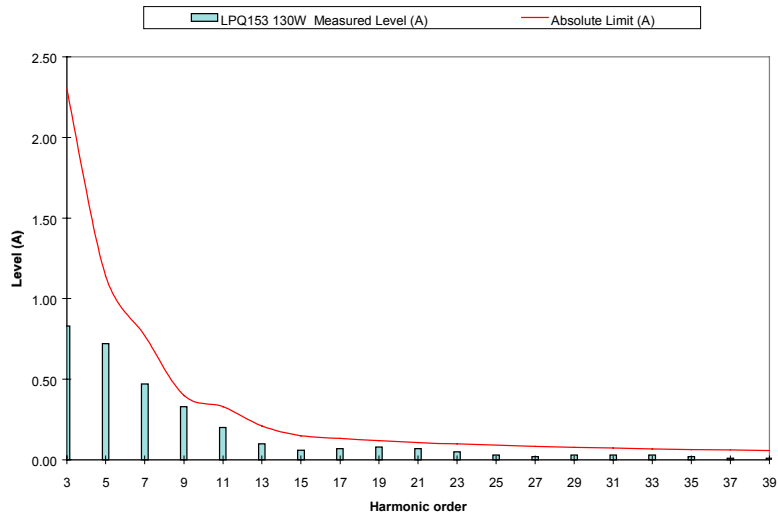


Description (continued)

Harmonics to EN61000-3-2, Class A Limits



Harmonics to EN61000-3-2, Class A Limits



Harmonics to EN61000-3-2, Class A Limits

