



Product Service

CERTIFICATE

No. B 15 12 13890 02538

Holder of Certificate: **Astec International Ltd.**
 16th Floor, Lu Plaza, 2 Wing Yip Street
 Kwun Tong
 Kowloon
 HONG KONG



Certification Mark:



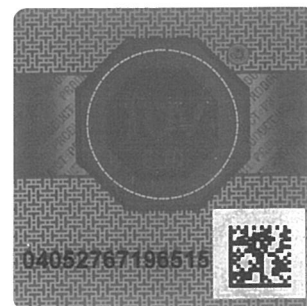
Product: **Power supply
 (Power Supply for Building-in)**

The product was tested on a voluntary basis and complies with the essential requirements. The certification mark shown above can be affixed on the product. It is not permitted to alter the certification mark in any way. In addition the certification holder must not transfer the certificate to third parties. See also notes overleaf.

Test report no.: 68230921103

Valid until: 2020-12-13

Date, 2015-12-14 (Ricky Wang)
 Page 1 of 2



CERTIFICATE
No. B 15 12 13890 02538



Product Service

Model(s): LPT51, LPT54

Parameters:

Rated Input :	100-240VAC, 50/60Hz, 2A
Rated DC Output :	For Model LPT51: +3.3V, 8A; +12V, 0.5A; +5V, 3A Total maximum output power is 47.4W
	For Model LPT54: +5V, 8A; +12V, 0.5A; +24V, 1.5A Total maximum output power is 55W
Construction :	Built-in
Protection Class :	I
Degree of Protection :	IPX0
Remarks :	<ul style="list-style-type: none"> - When installing the equipment, all requirements of the mentioned standard must be fulfilled. - The maximum operating temperature is 50°C. - Clearance was evaluated for operating altitude up to 3000m above sea level. - Built-in type equipment, electrical, mechanical and fire enclosures must be considered in end system.

Tested according to: EN 60950-1:2006/A2:2013

Production Facility(ies): 51369