



Product Service

CERTIFICATE

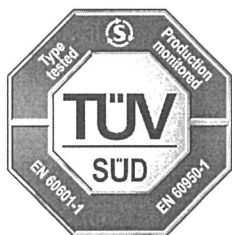
No. Z2 15 10 51485 01417

**Holder of Certificate: Astec International Limited
- Philippine Branch**

3rd & 4th Floor, Techno Plaza One Bldg
#18 Orchard Road
Eastwood City Cyberpark, Bagumbayan
1110 Quezon City
PHILIPPINES



Certification Mark:



**Product: Switch mode power supplies
(Switch Mode Power Supply for Building-in)**

The product was tested on a voluntary basis and complies with the essential requirements. The certification mark shown above can be affixed on the product. It is not permitted to alter the certification mark in any way. In addition the certification holder must not transfer the certificate to third parties. See also notes overleaf.

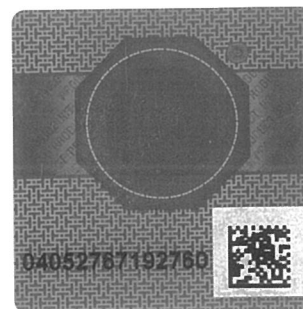
Test report no.: 682301118003

Valid until: 2020-10-15

Date, 2015-10-20

Page 1 of 2


(Jimmie Huang)





CERTIFICATE

No. Z2 15 10 51485 01417

Model(s): NPT42-M, NPT43-M, NPT44-M

Parameters:

Rated Input : 100-240V, 1.8A, 50/60Hz
 Rated Output : NPT42-M: +5VDC, 8.0A MAX; +12VDC, 3.0A MAX; -12VDC, 0.7A MAX;
 NPT43-M: +5VDC, 8.0A MAX; +15VDC, 2.4A MAX; -15VDC, 0.7A MAX;
 NPT44-M: +5VDC, 8.0A MAX; +24VDC, 1.5A MAX; +12VDC, 0.7A MAX
 Maximum output power for all models:
 45W with convection cooling,
 55W with 30CFM forced air cooling

Construction : Built-in
 Protection Class : Built-in component,
 consider in end system

Degree of Protection : IPX0

Remark :

1. When installing the equipment, all requirements of the mentioned standard must be fulfilled.
2. Refer to the installation and operating instruction from manufacturer for the details of loading condition and operating temperature.
3. Clearance was evaluated for operating altitude up to 3000m above sea level.
4. Built-in type equipment, suitable enclosure should be provided in end system.
5. These power supplies have been evaluated according to EN 60601-1:2006/A1:2013 with the following conditions:
 - The output was not evaluated as patient connected circuits.
 - Compliance with the requirements for EMC shall be evaluated for the end use product.
 - These power supplies have been investigated only as a component part for use in equipment where the suitability of the combination is subject to end product investigation.
 - When these power supplies are classified class I: Earthing connection and continuity test shall be checked in end product.
 - These power supplies must be installed in accordance with the instruction manual.
 - The leakage current test shall be checked in end product.
 - The risk management requirements of the standard were not addressed.
 - Clearance/creepage distance and dielectric strength were evaluated and fulfilled the requirements for MOPP.

Tested according to:
Production Facility(ies):

EN 60950-1:2006/A2:2013
 EN 60601-1:2006/A1:2013
 62777, 28532