



Product Service

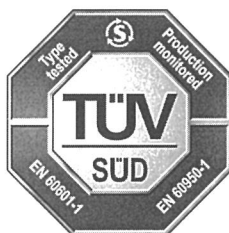
CERTIFICATE

No. Z2 15 10 13890 02475

Holder of Certificate: **Astec International Ltd.**
 16th Floor, Lu Plaza, 2 Wing Yip Street
 Kwun Tong
 Kowloon
 HONG KONG



Certification Mark:

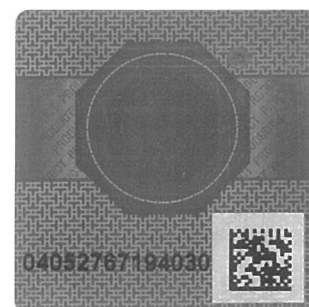


Product: **Power supply
 (AC POWER ADAPTER)**

The product was tested on a voluntary basis and complies with the essential requirements. The certification mark shown above can be affixed on the product. It is not permitted to alter the certification mark in any way. In addition the certification holder must not transfer the certificate to third parties. See also notes overleaf.

Test report no.: 68230905208

Valid until: 2020-10-27



Date, 2015-11-03
 Page 1 of 2

(Jimmy Ip)



CERTIFICATE
No. Z2 15 10 13890 02475

Model(s): DP4009N2M, DP4009N3M, DP4012N2M, DP4012N3M, DP4015N2M, DP4015N3M, DP4018N2M, DP4018N3M, DP4024N2M, DP4024N3M, DP4048N2M, DP4048N3M

Parameters:

Rated Input : 100-240VAC, 50/60Hz, 1.0A, 49W Max.
 Rated Output : For models DP4009N2M, DP4009N3M: 9VDC, 4.44A Max.
 For models DP4012N2M, DP4012N3M: 12VDC, 3.33A Max.
 For models DP4015N2M, DP4015N3M: 15VDC, 2.67A Max.
 For models DP4018N2M, DP4018N3M: 18VDC, 2.22A Max.
 For models DP4024N2M, DP4024N3M: 24VDC, 1.67A Max.
 For models DP4048N2M, DP4048N3M: 48VDC, 0.84A Max.

Protection Class : I (for models DP4009N3M, DP4012N3M, DP4015N3M, DP4018N3M, DP4024N3M and DP4048N3M)
 II (for models DP4009N2M, DP4012N2M, DP4015N2M, DP4018N2M, DP4024N2M and DP4048N2M)

Degree of Protection : IP20

Remark:
 - When installing these equipments, all requirements of the mentioned standard must be fulfilled.
 - Refer to the installation and operating instruction from manufacturer for the details of loading condition and operating temperature.
 - Clearance was evaluated for operating altitude up to 3000m above sea level.
 - These power supplies have been evaluated according to EN 60601-1:2006/A1:2013 with the following conditions:
 1.The output was not evaluated as patient connected circuits.
 2.Compliance with the requirements for EMC shall be evaluated for the end use product.
 3.These power supplies have been investigated only as a component part for use in equipment where the suitability of the combination is subject to end product investigation.
 4.These power supplies must be installed in accordance with the instruction manual.
 5.The leakage current test shall be checked in end product.
 6.The risk management requirements of the standard were not addressed.
 7.Clearance/creepage distance and dielectric strength were evaluated and fulfilled the requirements for MOPP.

Tested according to: EN 60601-1:2006/A1:2013
 EN 60950-1:2006/A2:2013

Production Facility(ies): 41329