



**Astec Standard Power Europe**  
Astec House, Waterfront Business  
Park, Merry Hill, Dudley  
DY5 1LX, UK  
Tel: 01384 842211  
Fax: 01384 843355

**Astec Germany GmbH**  
Robert-Heil-Str. 8  
36251 Bad Hersfeld  
Tel: 06621-5057-0  
Fax: 06621-5057-20

**Astec France**  
Les Arcades  
424, la Closerie Mont d'Est  
93194 Noisy Le Grand  
Tel: (1) 43 05 86 80  
Fax: (1) 43 04 60 33

## Application Note Number 1

**Product: MVP**

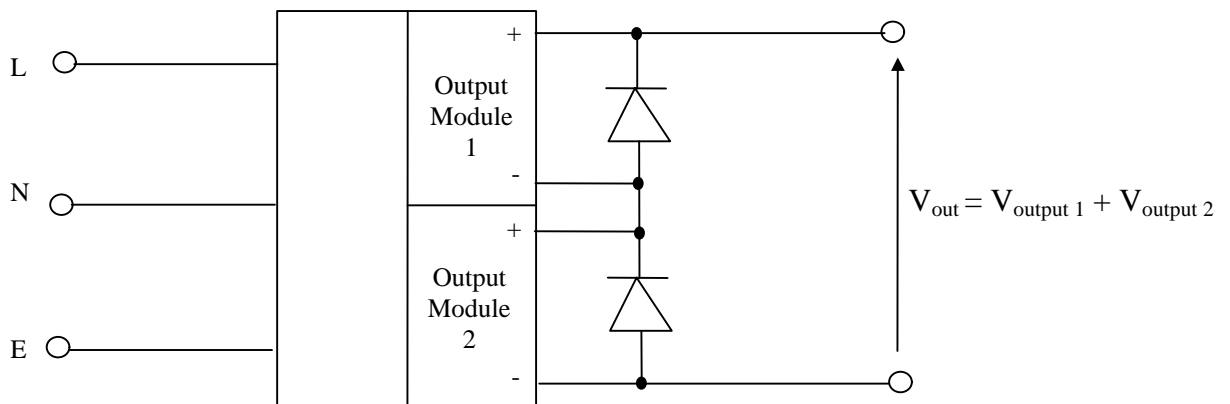
**Application Overview: Connection of output modules in series to achieve output voltages higher than 60Vdc.**

Originator: B. Lewis

Location: Stourbridge

Date: 3/6/97

### Schematic



### Description

Output modules in the MVP range may be connected in series to achieve output voltages higher than the maximum 60V available from any single module. In order to ensure that no module output experiences reverse voltages caused by differences between modules during start-up, diodes must be connected across each module, as shown in the schematic above.

It is important to note that the output voltages resulting from this type of application will exceed the SELV limits of IEC950. It is the responsibility of the installer to ensure that all the relevant safety requirements are met.