

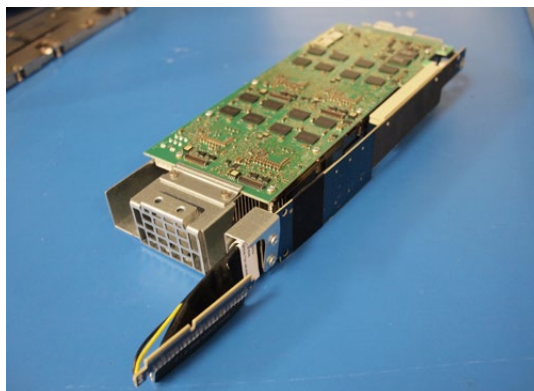
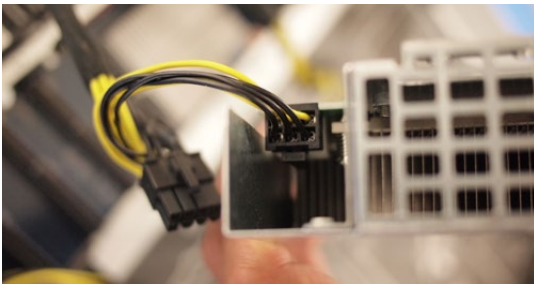
## So You Want to...

### Install Artesyn SharpStreamer™ PCIE-7207 Cards into a Dell PowerEdge C4130 Rack Mount Server?

*This document covers aspects of fitting the SharpStreamer™ PCIE-7207 video processing accelerator card into a Dell PowerEdge C4130 rack mount server.*



Dell C4130 Server



#### THE DELL POWEREDGE C4130 SERVER

The Dell PowerEdge C4130 server is the new generation 1U rack mount server focused on high performance computing. The server is based on the E5-26xx v3 Intel® Xeon® technology (Code name Haswell) and can host up to 16 DIMMs of DDR4 memory. It is available in multiple configurations, however, this application note is specific to the server OEM configuration C with PN: 321-BBRF.

For more details, visit the [DELL website](#).

#### THE SHARPSTREAMER VARIANT PCIE-7207-4-C4130 HARDWARE INSTALLATION

In a dual Intel Xeon configuration, the Dell C4130 server can support up to four SharpStreamer™ PCIE-7207-4-C4130 cards. These variants are optimized versions of the standard SharpStreamer PCIE-7207 for use only in this server configuration. Cards are shipped with a double width slot heatsink in place of the standard single width slot version and custom mechanical brackets for securing the card in the chassis GPU slots. Each card should be installed in GPU slots #1 thru #4.

When installing the SharpStreamer C4130 variant, the server's auxiliary power and PCI express data cabling must be used to route PCI Express data from the SharpStreamer card to the server backplane. Adjacent cards should be installed in alternating orientation. Each end of the SharpStreamer mechanical bracket has a corresponding mounting point. Cards should fit snugly in each slot. We recommend installing two adjacent cards beside each other at the same time for ease of installation (ex: 1&2, 3&4). See photos for reference.

#### INSTALLING THE SOFTWARE PACKAGE

##### Software Installation Dependencies:

- Server running CentOS 7.x
- Tftp-server, syslinux and dhcp
- Firewall (ie. firewalld, iptables, etc) configured to allow system to run above services

Unzip and install SharpStreamer Host-side utilities and Centos 7 reference image. Proceed with software installation as documented in each software package "readme" file. Artesyn SharpStreamer PCIE-7207 documentation and software packages can be obtained on the SWORDS portal or through your Artesyn Field Application Engineer.



